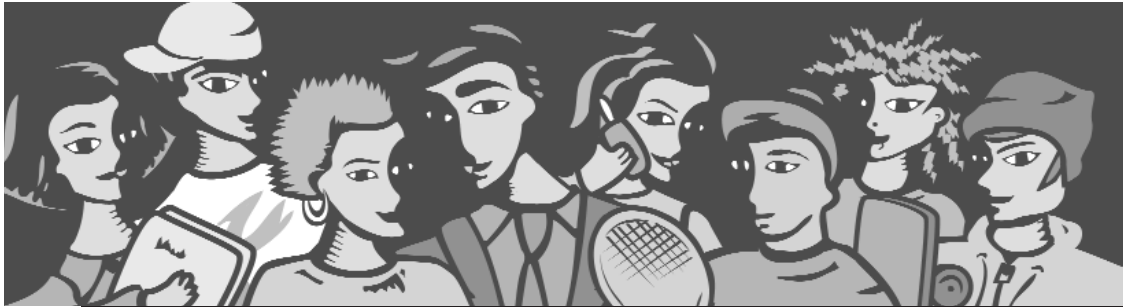


# Patterns and precursors of adolescent antisocial behaviour

O U T C O M E S   A N D   C O N N E C T I O N S



T H E   T H I R D   R E P O R T

**Diana Smart and Nick Richardson**

Australian Institute of Family Studies

**Ann Sanson**

University of Melbourne

**Inez Dussuyer and Bernie Marshall**

Crime Prevention Victoria

and the

**Australian Temperament Project team**

John W. Toumbourou, Margot Prior and Frank Oberklaid

A collaborative partnership between the Australian Institute of Family Studies and  
Crime Prevention Victoria, Department of Justice.



AUSTRALIAN TEMPERAMENT PROJECT

*A study of development from infancy to adulthood*



Published by the Australian Institute of Family Studies

© Australian Institute of Family Studies – Commonwealth of Australia 2005

Australian Institute of Family Studies  
300 Queen Street, Melbourne 3000 Australia  
Phone (03) 9214 7888 Fax (03) 9214 7839  
Internet [www.aifs.org.au](http://www.aifs.org.au)

The Australian Institute of Family studies is committed to the creation and dissemination of research-based information on family functioning and wellbeing. Views expressed in its publications may not reflect Institute policy, the opinions of the Institute, the Institute's Board of Management, nor the Australian Government.

The views expressed in this publication may not reflect the opinions or policy of Crime Prevention Victoria, or the Victorian Government.

This work is copyright. Apart from any use as permitted under the *Copyright Act 1968*, no part may be reproduced by any process without permission in writing from the Australian Institute of Family Studies.

*Patterns and precursors of adolescent antisocial behaviour: Outcomes and connections*, The third report from the collaborative partnership between the Australian Institute of Family Studies and Crime Prevention Victoria.

Bibliography  
ISBN 0 642 39529 2

Designed by Double Jay Graphic Design  
Printed by Impact Printing

# Minister's foreword

---

Victoria is one of the best places to raise a family because we have some of the safest homes, streets and neighbourhoods in the nation.

Early intervention is important. Experts from around the world agree that keeping young people out of trouble from an early age is the best way to help them stay on track. This is why I applaud the work of the Australian Institute of Family Studies and Crime Prevention Victoria for their work on the series *Patterns and Precursors of Adolescent Antisocial Behaviour*.

The third and final report looks at the common risk factors between young people who engage in criminal and anti-social behaviour. This report builds on the work of two previous reports, and follows more than 2000 Victorian children and their families from infancy to adulthood.

By looking at the environmental and social factors that children and families are exposed to, this study identifies patterns and behaviours that could point towards the need for early intervention strategies.

It is aimed at developing a better understanding of antisocial and criminal behaviour in young people. By identifying problems early we can prevent children from heading down the wrong path.

I congratulate both the Australian Institute of Family Studies and Crime Prevention Victoria on delivering this innovative research project with sound, empirically-based evidence to guide future prevention and early intervention efforts.

**Tim Holding MP**

Minister for Police & Emergency Services

## Director's foreword

---

Adolescent antisocial behaviour greatly concerns governments, researchers, and community members alike. Although this issue has been the focus of intensive research over recent decades, many questions regarding the development and consequences of this type of behaviour remain to be answered. Effective prevention and early intervention efforts to avert the onset of antisocial behaviour among children and adolescents rely to a large extent on an accurate understanding of its origins and course. Thus the research contained in this report is particularly welcome.

The report *“Patterns and Precursors of Adolescent Antisocial Behaviour: Outcomes and Connections – Third Report”* continues the valuable work of the first two reports in this series, and marks the culmination of the collaboration between the Australian Institute of Family Studies and Crime Prevention Victoria. It makes use of the Australian Temperament Project dataset to investigate six distinct topics relating to adolescent antisocial behaviour. This large longitudinal, community study has followed children's development over the first 20 years of life, investigating their psychosocial adjustment and wellbeing, and the influence of family and wider environmental factors via 13 waves of data collected from a representative sample of 2,443 children and parents.

The six topics addressed in the Third Report are: the continuity of persistent adolescent antisocial behaviour into early adulthood; links between antisocial behaviour and victimisation during early adulthood; associations between adolescent substance use and antisocial behaviour; the development of persistent antisocial behaviour among low-risk children; connections between motivations to comply with the law, attitudes, and antisocial behaviour; and the correspondence between official records and self reports of offending and victimisation.

I highly commend this report, which contains important new knowledge about the development of antisocial behaviour among young Australians, and its impact upon their wellbeing and adjustment. I am confident that it will provide valuable insights for policy development and practical interventions, and add substantially to our knowledge of this type of behaviour. Ultimately, through the understandings gained by research such as this, we will be able to help children to make the best start in life and promote their later positive development within the context of their family and community life.

**Professor Alan Hayes**

Director  
Australian Institute of Family Studies

# Contents

---

Minister's foreword	v
Director's foreword	vi
About the authors	x
Acknowledgments	xi
<b>Executive summary</b>	<b>xii</b>
<b>1. Introduction</b>	<b>1</b>
<b>2. Transitions to early adulthood and the persistence, commencement and cessation of antisocial behaviour</b>	<b>5</b>
<i>List of tables and figures</i>	6
Research into the continuation of antisocial behaviour into adulthood	7
The transition to early adulthood	8
Methodology	9
Findings	12
Continuity of adolescent antisocial behaviour into adulthood	12
Could a <i>late-onset</i> group be identified?	12
Summary	13
Outcomes of adolescents who displayed differing patterns of antisocial behaviour	13
Summary	18
Discussion and implications	18
Conclusions	21
<b>3. Connections between antisocial behaviour and victimisation</b>	<b>23</b>
<i>List of tables and figures</i>	24
Research into youth victimisation and its consequences	25
Factors associated with victimisation	25
Explanations of victimisation – beyond Routine Activities	26
Reporting of victimisation experienced by youth	26
Methodology	27
Findings	29
Rates of victimisation	29
Summary	30
Relationship between victimisation and antisocial behaviour	30
Summary	31
Factors associated with victimisation	32
Summary	34
Rates of reporting victimisation to police, and the reasons for not reporting	34
Summary	36
Discussion and implications	36
Conclusions	39

<b>4. The role of substance use in the development of adolescent antisocial behaviour</b>	<b>41</b>
<i>List of tables and figures</i>	42
Adolescent substance use	43
Connections between adolescent substance use and antisocial behaviour	43
Methodology	45
Findings	49
Connections between substance use and antisocial behaviour	49
Summary	53
Early substance use as a risk factor for later antisocial behaviour	54
Summary	56
Relationship between adolescents' antisocial behaviour and substance use and their friends' antisocial behaviour and substance use	57
Summary	60
Discussion and implications	60
Conclusions	64
<b>5. Pathways to persistent adolescent antisocial behaviour: Why do some low risk children become antisocial adolescents?</b>	<b>65</b>
<i>List of tables and figures</i>	66
Why might low risk children engage in adolescent antisocial behaviour?	67
Methodology	68
Findings	69
Timing and extent of group differences from infancy to early adulthood	69
Group differences at different developmental stages	69
Summary	79
Did low risk and high risk persistently antisocial adolescents differ in the continuation of antisocial behaviour in early adulthood?	81
What were the later life outcomes of individuals who had been low risk and high risk antisocial adolescents?	81
Summary	85
Discussion and implications	85
Conclusions	88
<b>6. Motivations to comply with the law, attitudes and antisocial behaviour</b>	<b>89</b>
<i>List of tables and figures</i>	90
Motivations to comply with the law	91
Young adults' contact with and attitudes towards criminal justice agencies	92
Methodology	93
Findings	95
Motivations to comply with the law among all, and among highly antisocial and low/non antisocial, young adults	95
Summary	98
Statistical differences in motivations to comply with the law	98
Summary	99
Attitudes towards police and courts	99
Summary	100
Statistical differences in attitudes towards police and courts	100
Attitudes of those with contact with the criminal justice system	100
Summary	102
Discussion and implications	102
Conclusions	104

<b>7. Concordance between official records and self reports</b>	<b>105</b>
<i>List of tables and figures</i>	106
Official records	107
Comparisons of official records with self reports	107
The question of accuracy	108
Methodology	109
Findings	110
Comparison of those who did and did not give consent	110
Summary	111
Patterns and trends in police records	112
Summary	114
Comparison of official records with self reports (official records → self reports)	115
Summary	116
Comparison of self reports with official records (self reports → official records)	117
Summary	119
Comparison of individuals who had an official record for offending and those identified by self report as persistently antisocial	119
Summary	120
Discussion and implications	120
Conclusions	122
<b>8. Conclusions</b>	<b>123</b>
The diversity of pathways to antisocial behaviour	126
The co-occurrence of problem behaviours	127
Intervention implications	127
<b>9. References</b>	<b>129</b>

Appendices giving details of the statistical analyses conducted are available from the Crime Prevention website ([www.crimeprevention.vic.gov.au](http://www.crimeprevention.vic.gov.au)) and the Australian Institute of Family Studies website ([www.aifs.gov.au/atp](http://www.aifs.gov.au/atp))

## About the authors

**Diana Smart** is a Research Fellow at the Australian Institute of Family Studies, and has been the Project Manager for the Australian Temperament Project since 1988. Her research interests are adolescent and youth development, transitions to young adulthood, developmental pathways and transition points, and the fostering of social competence and social responsibility. Prior to joining the Australian Temperament Project, Diana was a researcher with the Victorian Education Department's Curriculum and Research Branch and the Royal Melbourne Institute of Technology's Education Unit, and lectured in Psychology at Rusden Teachers College.

**Nick Richardson** joined the Australian Institute of Family Studies as a Research Officer in February 2003. In this capacity, Nick contributed to the collaborative project between the Institute and Crime Prevention Victoria examining issues relating to the development of adolescent antisocial and criminal behaviour among participants of the Australian Temperament Project. Nick currently works for that National Child Protection Clearinghouse, also located at the Institute, as a Research Officer. His research interests include the relationship between antisocial behaviour and victimisation and child abuse and neglect.

**Ann Sanson** is an Associate Professor in the Department of Psychology at the University of Melbourne, where her teaching and research are in the areas of developmental psychology, developmental psychopathology and conflict resolution. She was formerly Acting Director of the Australian Institute of Family Studies, is the Project Director for Growing Up in Australia (the Longitudinal Study of Australian Children) and is a leading investigator in the Australian Temperament Project. She has published widely including books, book chapters and journal articles. Ann is a Fellow of the Australian Psychological Society.

**Inez Dussuyer** is the Project Manager for the Victorian Implementation Review of the Recommendations from the Royal Commission Into Aboriginal Deaths In Custody. Prior to this she was the Assistant Director (Research) of Crime Prevention Victoria, Victorian Department of Justice. She is a criminologist and previously worked in criminal justice and crime prevention research in academic institutions in Canada, France and Australia.

**Bernie Marshall** was the Acting Director of Crime Prevention Victoria, a business unit of the Department of Justice, at the time this report was completed. Bernie was responsible for the implementation of the State Government's Crime and Violence Prevention Strategy, under the banner of Safer Streets and Homes. Bernie has considerable experience in the public sector with 25 years of service in a range of management, operational and policy roles including extensive experience in the Human Services area. He was formerly Assistant Director, Policy and Programs with Crime Prevention Victoria, and was instrumental in the development of Government policy aimed at making our streets, homes and workplaces safer, as part of the *Growing Victoria Together* policy.

**John W. Toumbourou** is an Associate Professor and a senior researcher at the Centre for Adolescent Health, Royal Children's Hospital, and a member of the Department of Paediatrics at the University of Melbourne. He is a founding member and the current Chair of the College of Health Psychologists within the Australian Psychological Society. John is a principal investigator on a number of studies examining healthy youth development, including the Australian Temperament Project and the International Youth Development study (a collaborative longitudinal study with the University of Washington), and has been involved in the development of a number of youth health promotion programs.

**Professor Margot Prior** is a member of the Departments of Psychology and Paediatrics at the University of Melbourne. She is a Fellow of the Academy of the Social Sciences of Australia and of the Australian Psychological Society. She began a distinguished career in Developmental and Clinical Psychology in the 1970s, and has taught Psychology at La Trobe, Monash and Melbourne universities. From 1994 to 2002 she was Director of Psychology at the Royal Children's Hospital. Margot has been an investigator on the Australian Temperament Project since its inception.

**Professor Frank Oberklaid** is the Director of the University of Melbourne's Centre for Community Child Health, located at the Royal Children's Hospital, and is the author of numerous publications on children's development. Frank has received state, national and international awards, lectureships and visiting professorships, including a Medal in the Order of Australia in 1998. He has been an investigator on the Australian Temperament Project since its commencement.

## Acknowledgments

The authors of the report would like to express their appreciation for the support and guidance given by the Project Advisory Group established for this project. They gratefully acknowledge the valuable contribution of the members of this group, who are as follows:

- *Mr Michael Brown*, Director, Community and Network Support, Australian Department of Family and Community Services
- *Dr Patricia Brown*, Director, Children's Court Clinic
- *Mr Nigel D'Souza*, Manager, Community Initiatives, Community Support Fund, Victorian Department for Victorian Communities
- *Ms Mary Gledhill*, Policy and Program Advisor, Family and Community Support Branch, Victorian Department of Human Services
- *Inspector Bill Mathers*, Manager, Youth Advisory Unit, Victoria Police
- *Ms Julie Millar*, Senior Policy Officer, Student Welfare and Drug Education, Student Wellbeing Branch, Victorian Department of Education and Training
- *Mr John Prent*, Manager, Research and Web Services, Community Care Division, Victorian Department of Human Services
- *Ms Uma Rao*, Manager, Statistical Services Branch, Victoria Police
- *Mr Stuart Ross*, Department of Criminology, University of Melbourne
- *Dr Sheldon Rothman*, Senior Research Fellow, Australian Council for Educational Research
- *Associate Professor John W. Toumbourou*, Centre for Adolescent Health, Department of Paediatrics, University of Melbourne, and Murdoch Childrens Institute.
- *Mr Peter Yewers*, Manager, Student Welfare and Drug Education, Student Wellbeing Branch, Department of Education and Training

**The authors sincerely thank the parents, young people and teachers who have participated in the Australian Temperament Project. Without their loyalty and commitment to this project, this research would not have been possible.**