

Child Safety
Commissioner

promoting
the safety
and wellbeing
of children



Be.Heard Project

Listening to the voices of children and young people living in out of home care.

Australian Institute of Family Studies Conference 2010

**Presented by
Cathy Carnovale,
CREATE Foundation
&**

**Jim Oommen,
Senior Project Officer, Office of the Child Safety Commissioner**

Child Safety
Commissioner

promoting
the safety
and wellbeing
of children

create
FOUNDATION

Introducing Be.Heard

Research Tool

Strategy

Participants

Findings

What is Be. Heard?

- Participatory research project
- Face to Face, child friendly interviews
- Independent representation of children's view/
perceptions

Historical Context

- Crimes Misconduct Commission Queensland 2003/04
- Since 2006 - seven zones in QLD
- 2008-2009 - conducted in two regions in Victoria
- Expanded to Tasmania

Victorian Context

- OCSC commissioned CREATE Foundation 2008/2009
- Adapted Queensland Be.Heard program
- Deliver to 5-18 years of age
- Two regions: Southern Metropolitan R and Hume Region
- Residential Care, Foster Care, Kinship Care and Permanent Care
- Advisory Group
- Participation agreements and protocols

Child Safety
Commissioner

promoting
the safety
and wellbeing
of children

create
FOUNDATION

Research Tool

Placement and Support

Health

Family Contact

Cultural planning

Best Interest Planning

Family Decision Making

Education

Complaints and Feedback

Participation in Decision Making

Leaving Care

Rights

Strategy

- Contact Details from Department of Human Services (DHS) and Community Service Organisations (CSOs)
- Promotion - DHS, CSOs, through peak bodies
- Information packs distributed
- Follow up phone calls and drop in visits to recruit participants
- Interviews co facilitated by CREATE and OCSC

Participants

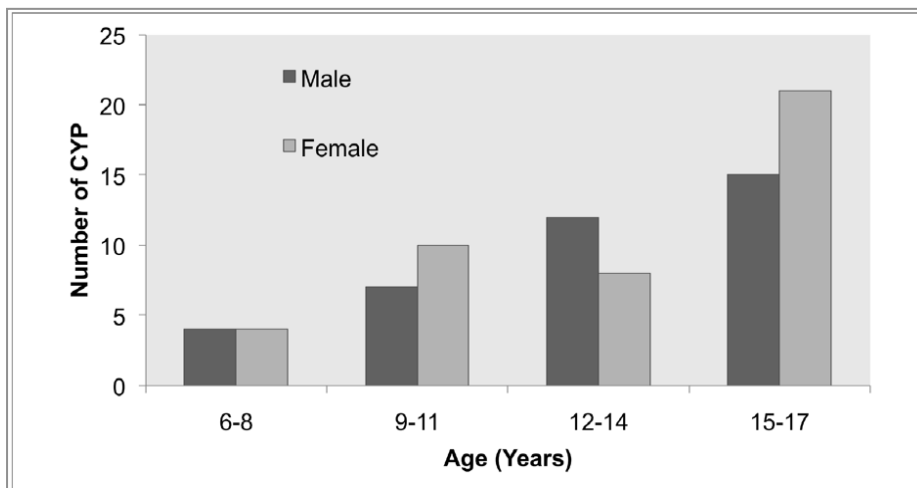
161 participants

56.5% females and 43.5% males

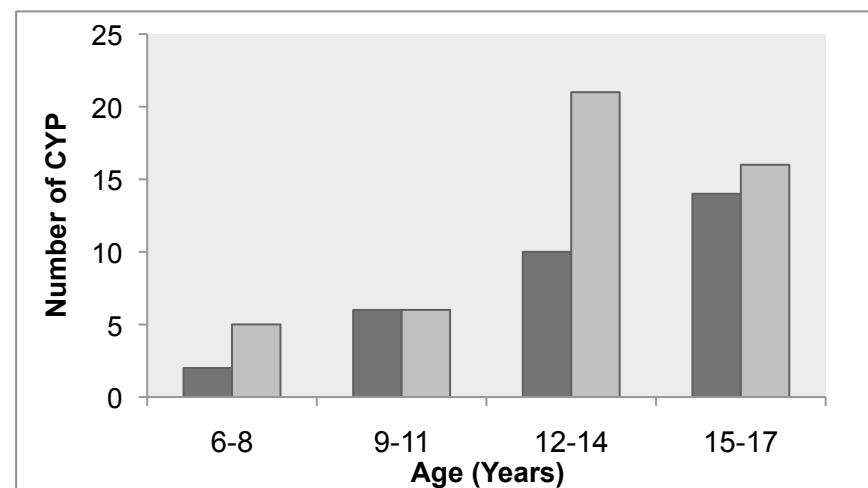
Age range 6 to 17

72.5% were 12 years or over

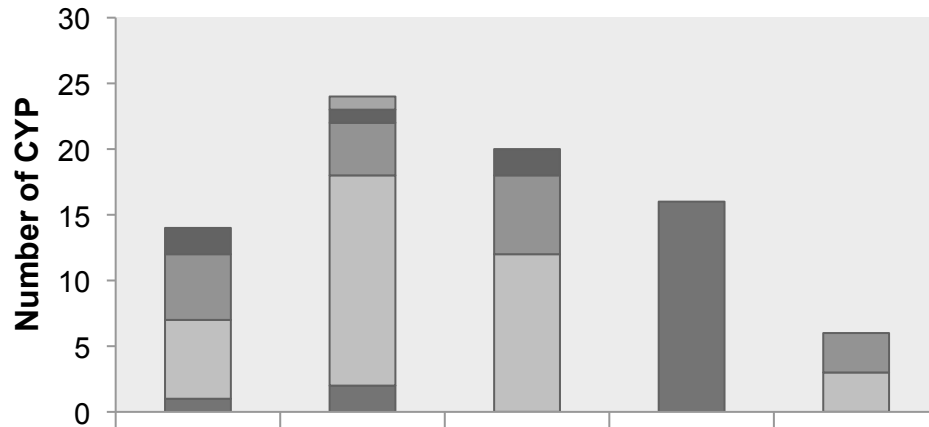
Southern Metropolitan Region Participants



Hume Region Participants

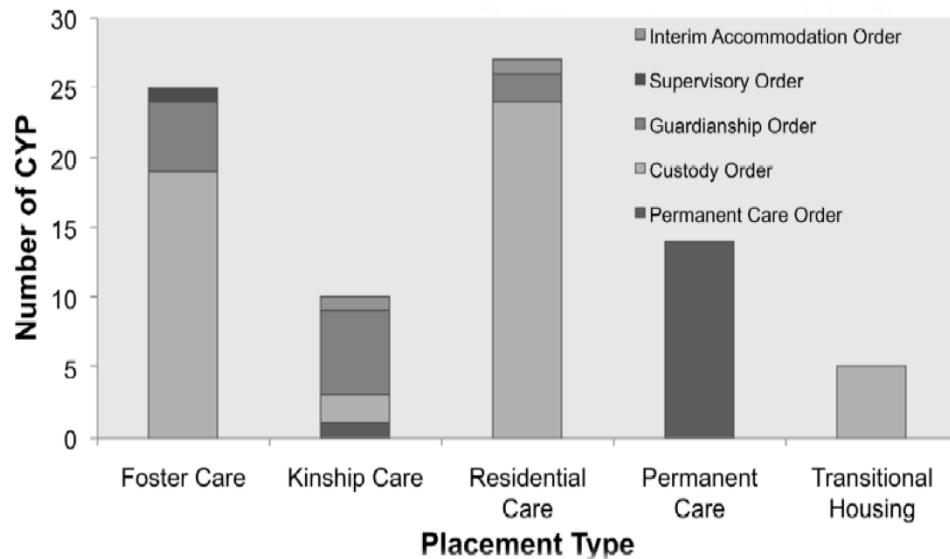


Hume Region



- Residence Order
- Interim Accommodation Order
- Guardianship Order
- Custody Order
- Permanent Care Order

Southern Metropolitan Region



Child Safety
Commissioner

promoting
the safety
and wellbeing
of children

create
FOUNDATION

Findings

1. Poor Knowledge and participation of the planning process

Child Safety
Commissioner

promoting
the safety
and wellbeing
of children

create
FOUNDATION

Findings

2. Inadequate dental health care

Child Safety
Commissioner

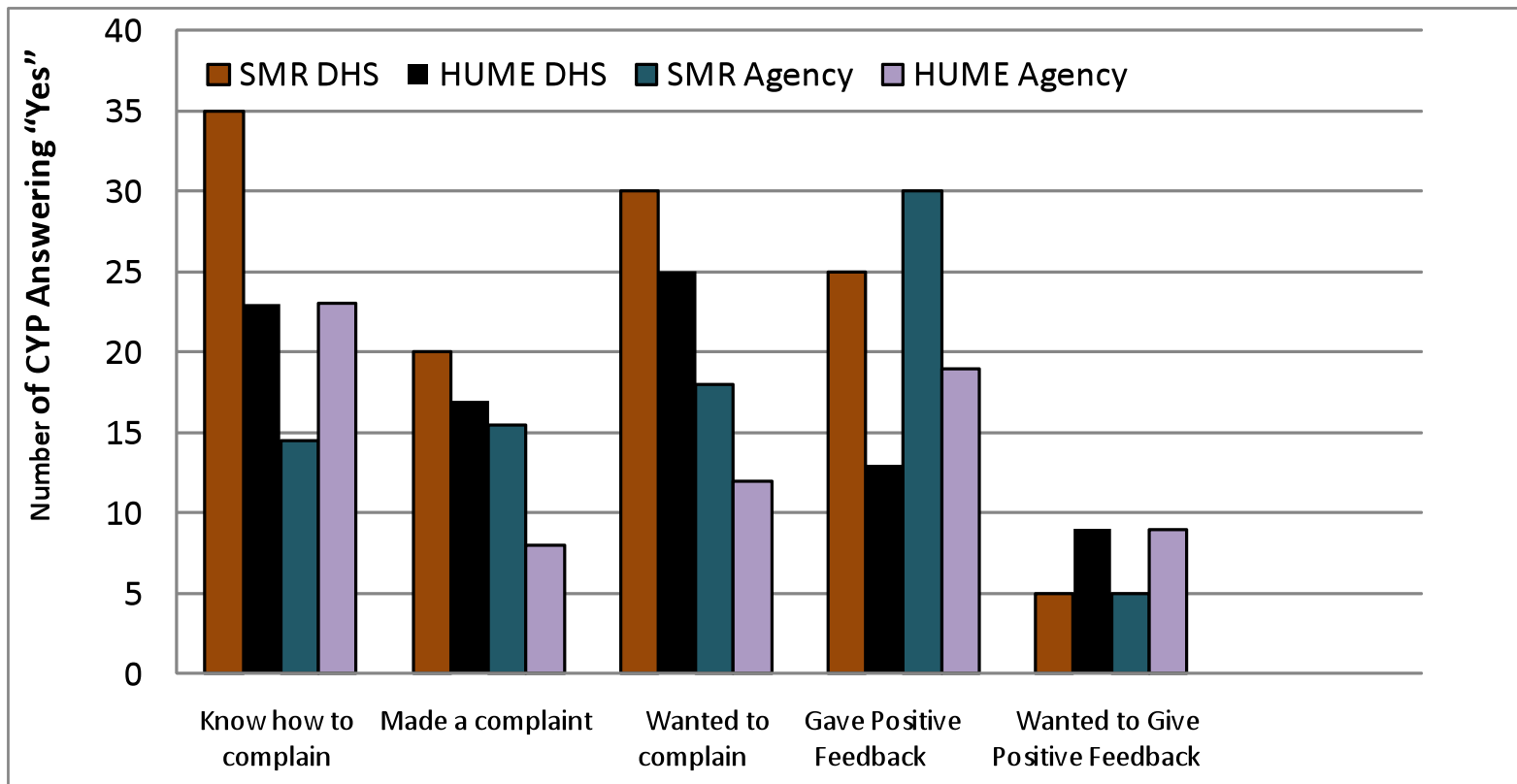
promoting
the safety
and wellbeing
of children

create
FOUNDATION

Findings

3. Limited knowledge of the complaints process

Findings



Child Safety
Commissioner

promoting
the safety
and wellbeing
of children

create
FOUNDATION

Findings

4. Limited knowledge of rights

Child Safety
Commissioner

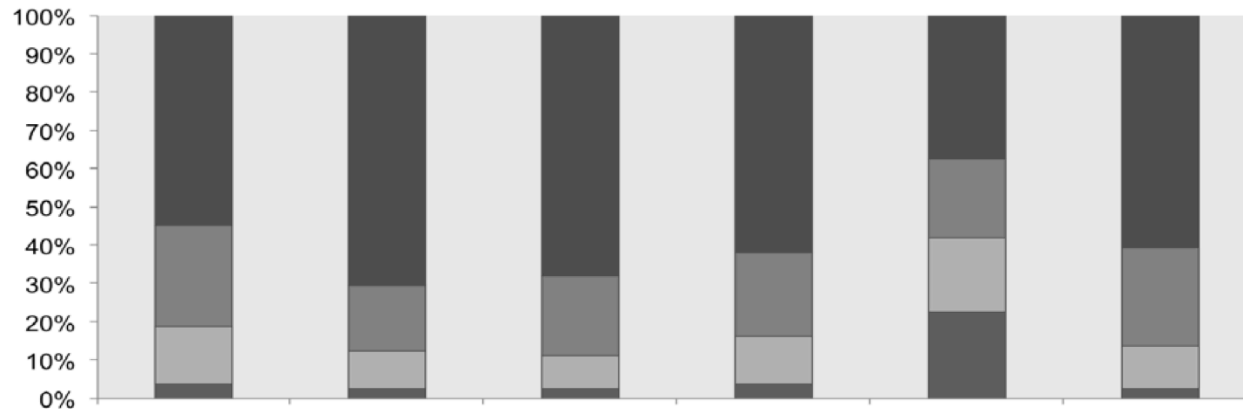
promoting
the safety
and wellbeing
of children

create
FOUNDATION

Findings

5. Desire for greater level of involvement in decision making

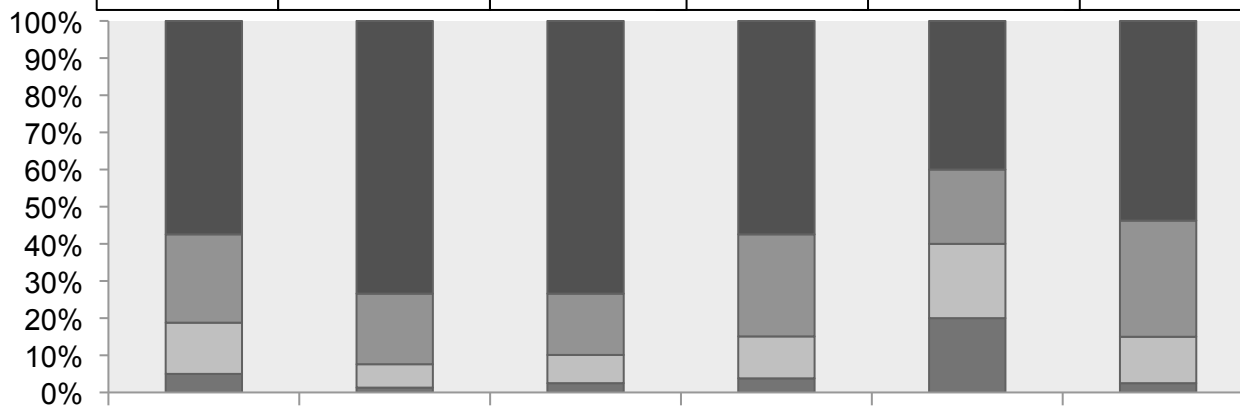
Findings



SMR



HUME



Education Visits Live Fun Contact Living

Child Safety
Commissioner

promoting
the safety
and wellbeing
of children

create
FOUNDATION

Findings

6. Family Contact

Child Safety
Commissioner

promoting
the safety
and wellbeing
of children

create
FOUNDATION

Findings

7. Majority of young people were engaged in school

Child Safety
Commissioner

promoting
the safety
and wellbeing
of children



CONTACT US

CREATE Foundation of Victoria

Phone: (03) 9918 0002 or 1800 655 105

Email: victoria@create.org.au

Web Page: www.create.org.au or www.createyourfuture.com.au

Office of the Child Safety Commissioner

Phone: (03) 8601 5884

Email: childsafe@ocsc.vic.gov.au

Web Page: www.ocsc.vic.gov.au