

Child Disability & Parental Well-Being

Eric Emerson, Gwynnyth Llewellyn, Andrew McCulloch, Chris Hatton, Jan Blacher & Hilary Graham



LANCASTER
UNIVERSITY




Background

- Lower well-being in mothers (and possibly fathers) of disabled children
 - 'mothers are paying a very high price for providing care' (Cummins, 2001)
 - But ...
 - Small, cross-sectional convenience samples
 - Failure to control for potentially important confounding factors
-

Aims

- Explore within well-constructed longitudinal samples

 The strength of the relationship between child disability and parental mental health (and when controlling for differences in exposure to risk factors)

 Factors associated with risk of and change in mental health status among parents of disabled children

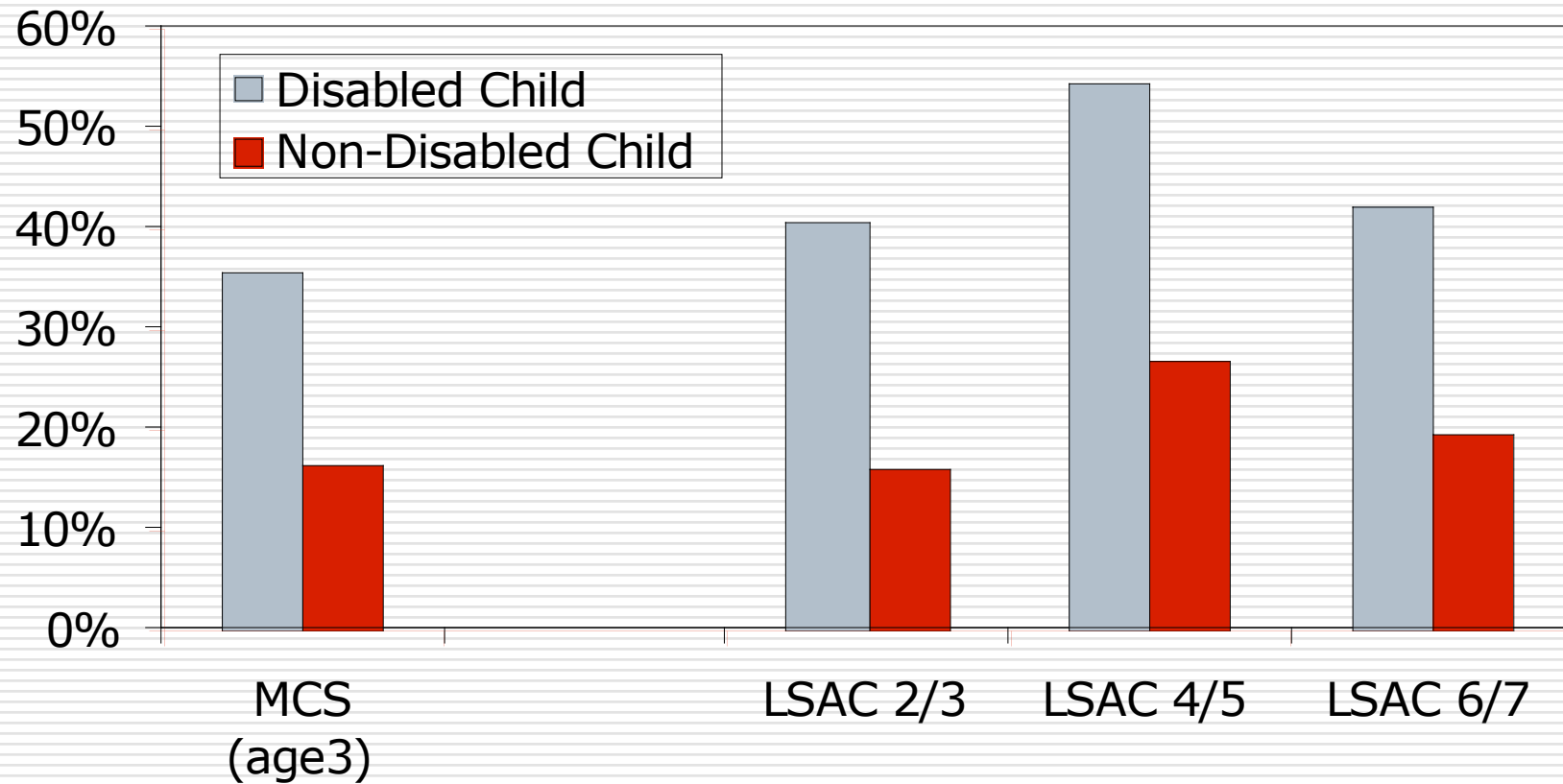
The Data

- LSAC B & K cohorts (Waves 1 & 2)
 - UK Millennium Cohort Study
 - Co-ordinated by Centre for Longitudinal Studies
<http://www.cls.ioe.ac.uk/>
 - 4th British birth cohort survey
 - Sample clustered by electoral ward
 - W1 (9 months)
 - n=18,819 infants in 18,553 families (82% in-scope response rate)
 - W2 (age 3)
 - n=15,590 (78% response rate)
-

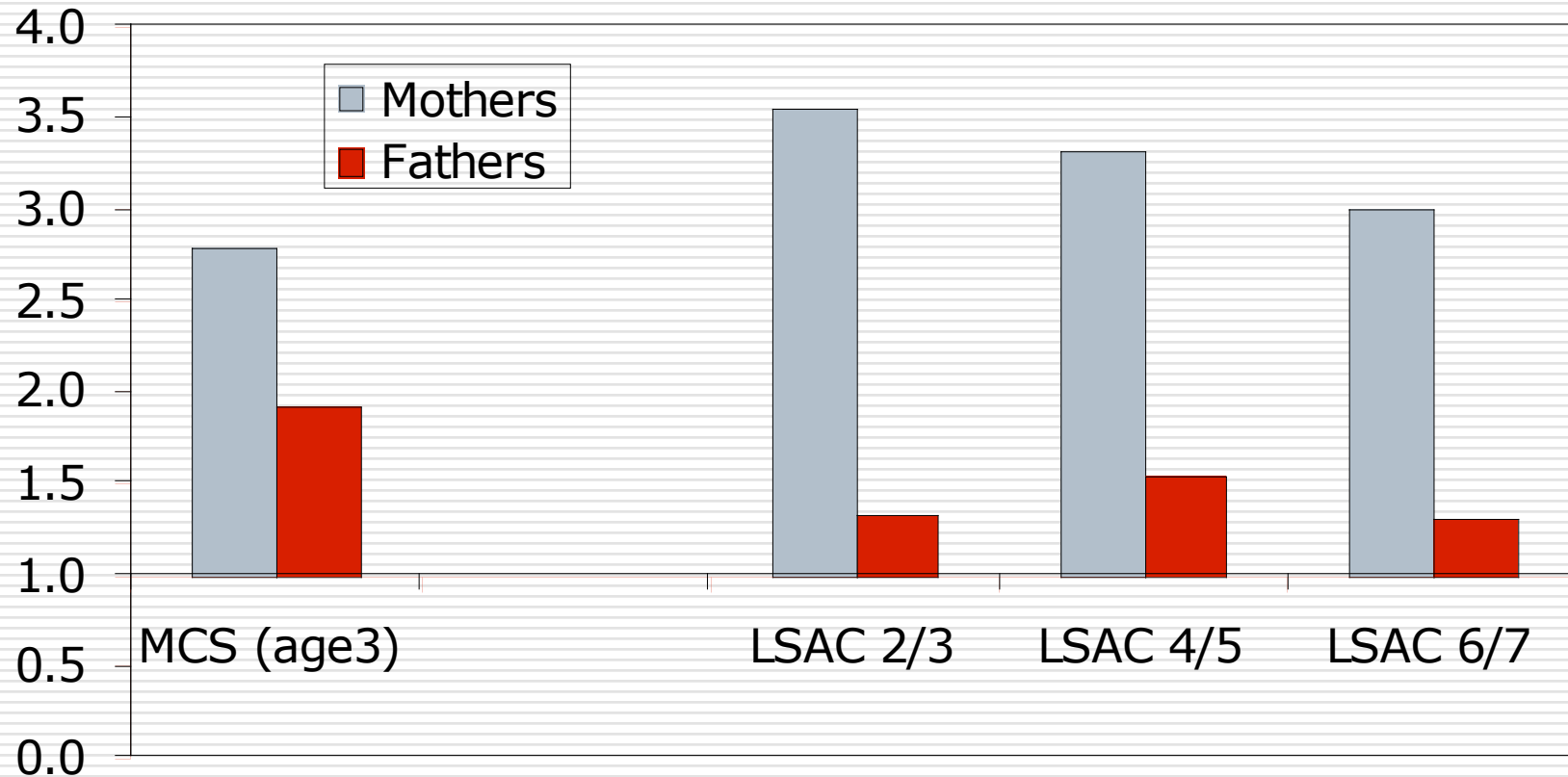
Key Measures

- Mental health status
 - Kessler K6 (score 6+)
 - 'Disability'
 - LSAC: lowest 2.5% of (weighted) sample on learning OR social emotional OR physical outcome measure (B2-, K1-)
 - MCS: lowest 3% on test of cognitive performance OR highest 4% on SDQ OR maternal report of limiting illness disability (9.4%)
 - Cumulative Disadvantage Index
 - Income poverty
 - Hardship
 - Housing tenure
 - Crowding
 - Maternal education
 - Employment status of household
 - Subjective poverty (LSAC)
 - Benefit receipt (MCS)
-

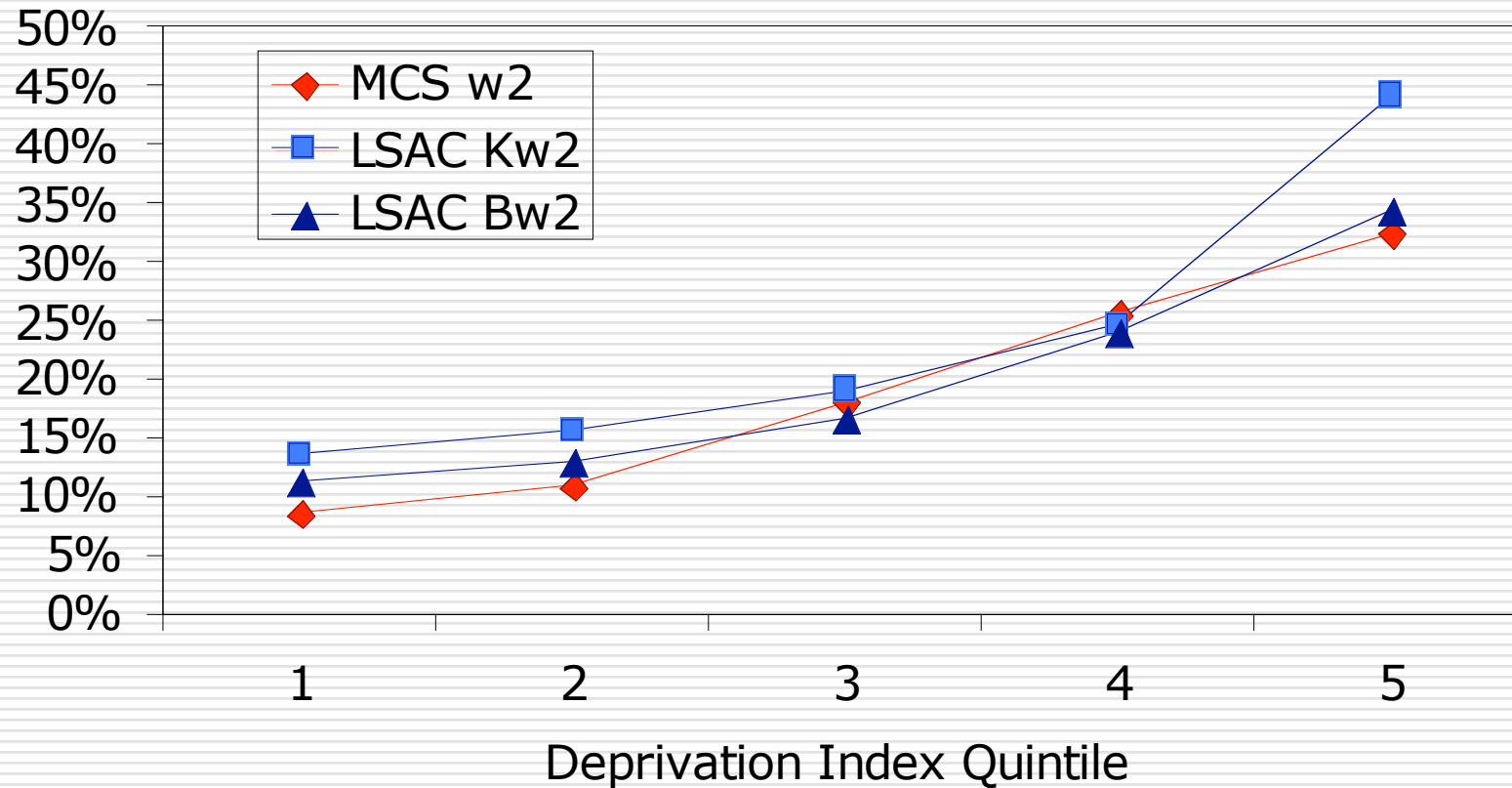
Child Disability & Maternal Distress



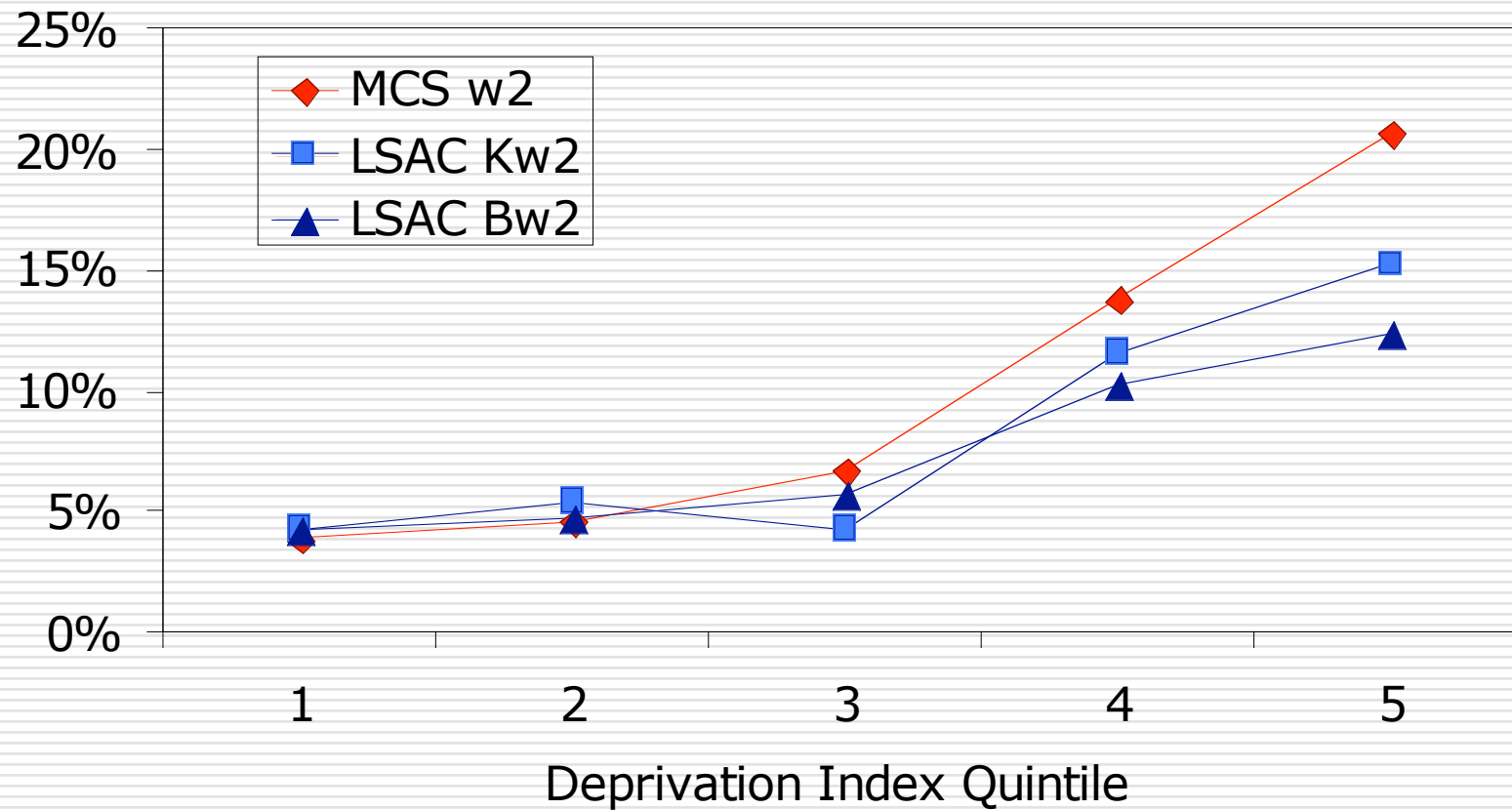
Child Disability & Odds of Distress



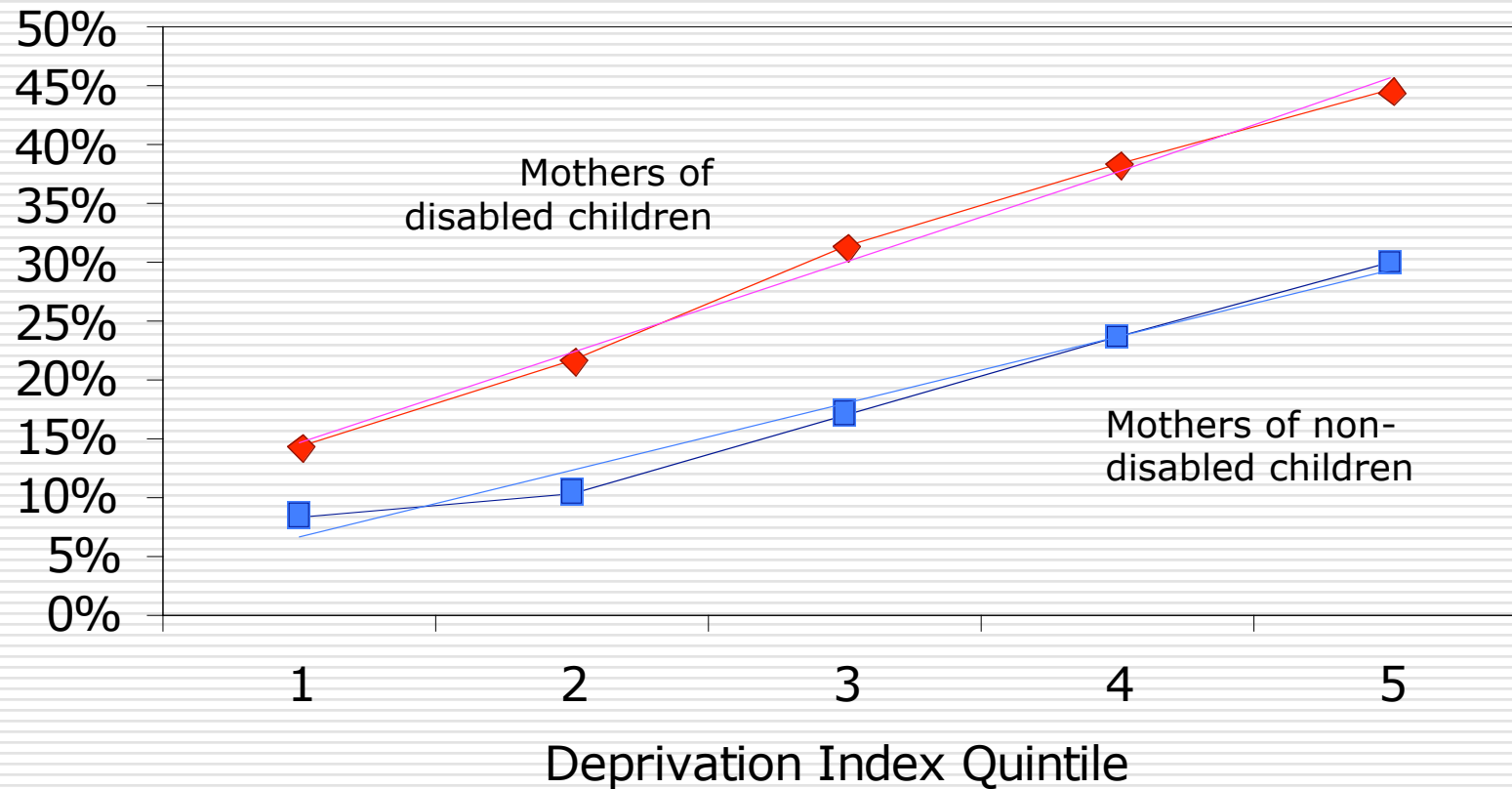
Deprivation & Maternal Distress



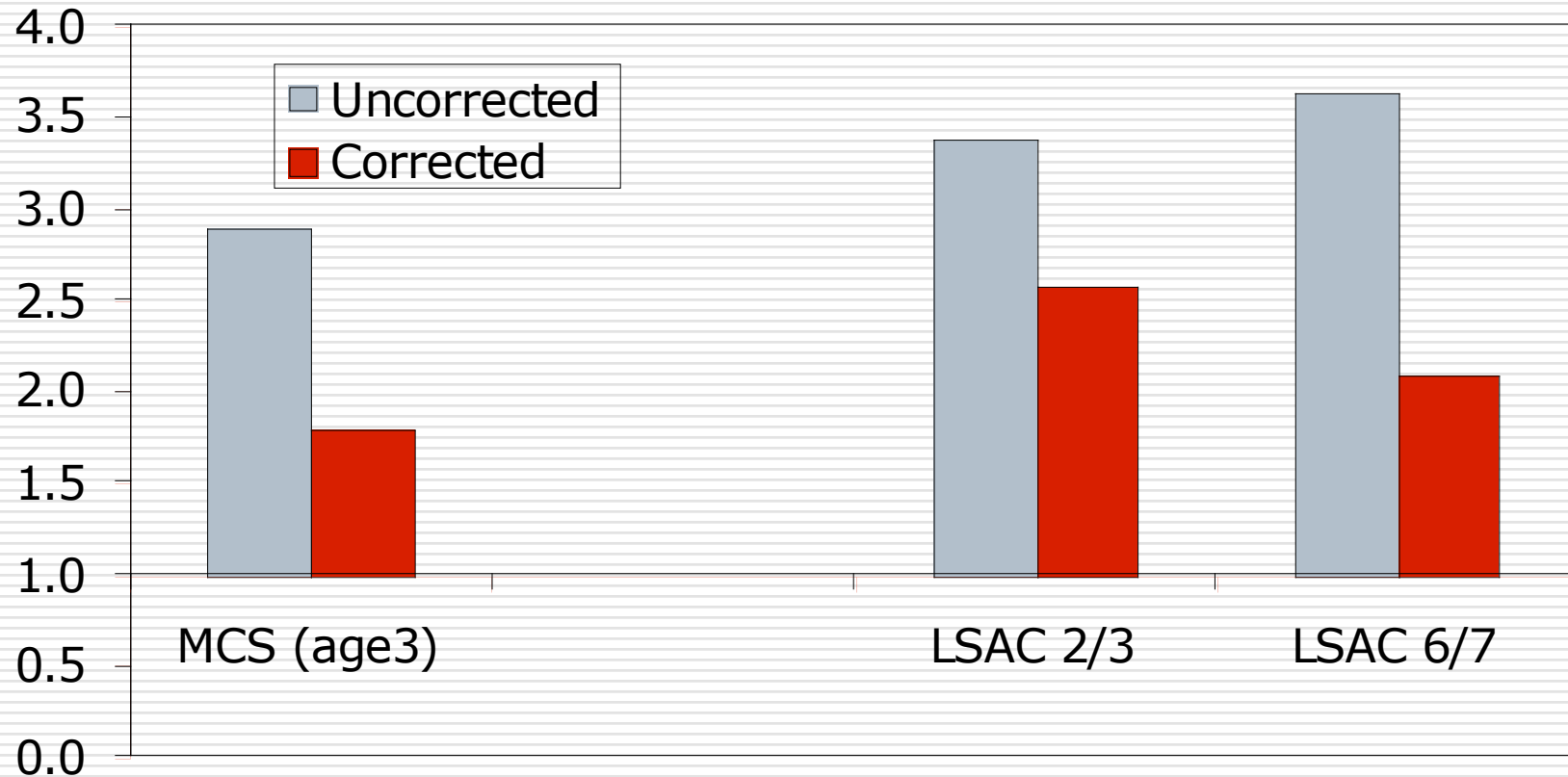
Deprivation & Child Disability



Cumulative Deprivation & Child Disability: MCS



Child Disability & Corrected Odds of Maternal Distress



W1 Predictors of Distress Among Mothers of Disabled Children (MCSw2)

Deprivation (Q1=reference) Q2	2.35***
Q3	2.18**
Q4	2.63***
Q5	5.65***
Self-rated health ('excellent' ref) 'good'	
'Fair/poor'	
Low general self-efficacy	
Low parenting self-efficacy	
Emotionally isolated	
Child temperament (low regularity)	
Child temperament (low pleasantness)	

* p<0.05 ** p<0.01 *** p<0.001

W1 Predictors of Distress Among Mothers of Disabled Children (MCSw2)

Deprivation (Q1=reference) Q2	1.78*
Q3	1.44
Q4	1.44
Q5	2.92***
Self-rated health ('excellent'=ref) 'good'	1.47
'fair/poor'	2.81***
Low general self-efficacy	2.27***
Low parenting self-efficacy	2.25*
Emotionally isolated	2.63***
Child temperament (low regularity)	1.77**
Child temperament (low pleasantness)	1.47

* p<0.05 ** p<0.01 *** p<0.001

W1 Predictors of Distress: Mothers of Disabled Children (LSACbw2)

Cumulative deprivation (0-1)	1.00
(2-4)	2.42*
(5+)	7.14***
Poor self-rated health	2.80*
Mother born overseas	2.10*
Low levels of financial support	2.14*
Area disadvantage (SEIFA Ad/Dis)	2.30*

* $p < 0.05$ ** $p < 0.01$ *** $p < 0.001$

W1 Predictors of Change in Distress: Mothers of Disabled Children (LSACbw2)

W1 Kessler caseness	4.70***
Cumulative deprivation (0-1)	1.00
(2-4)	2.14*
(5+)	6.71***
Poor self-rated health	
Mother born overseas	1.74
Low levels of financial support	1.95*
Area disadvantage (SEIFA Ad/Dis)	2.07

* p<0.05 ** p<0.01 *** p<0.001

Three (Quick) Conclusions ...

- The importance of
 - Secondary analysis (LSAC/MCS/etc)
 - Harmonising national longitudinal studies
 - Mainstreaming disability research & policy
-

Thank You!

eric.emerson@lancaster.ac.uk